

from Eagles - *The Very Best of Eagles*

# In the City

Words and Music by Joe Walsh and Barry De Vorzon

Gtrs. 3 & 4: Open E tuning:  
(low to high) E-B-E-G#-B-E

## Intro

Moderately slow  $\text{♩} = 82$

N.C.    A    D5            A    E            A    D5            A    E            A

Rhy. Fig. 1A

End Rhy. Fig. 1A

Gr. 2 (dist.)

mf

Rhy. Fig. 1

End Rhy. Fig. 1

Gr. 1 (dist.)

mf  
w/ phaser

## Verse

D5                            A            E                            A    D5                            A            E                            A

1. Some-where out \_ on that ho-ri - zon \_                            out be - yond \_ the ne-on lights,

Rhy. Fig. 2A

Rhy. Fig. 2

D5

A

E

A

D

E/D

A

E

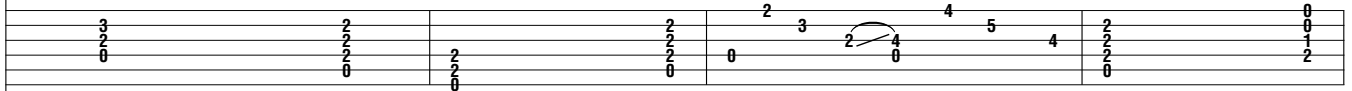


I know there must be some-thin' bet - ter, \_ but there's no - where else in \_ sight. \_\_\_\_

End Rhy. Fig. 2A



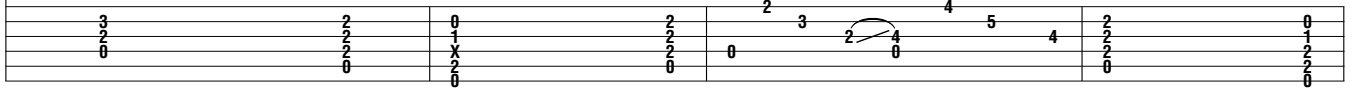
let ring -----| let ring -----|



End Rhy. Fig. 2



let ring -----| let ring -----|



Gtrs. 1 & 2: w/ Rhy. Figs. 2 & 2A (1st 7 meas.)

D5

A

E

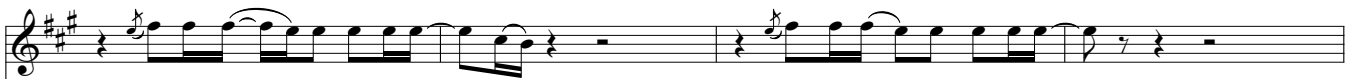
A

D5

A

E

A



It's sur - viv - al in the cit - y, \_ when you live \_ from day to day. \_\_\_\_



(Oo, \_\_\_\_ oo, \_\_\_\_ Oo, \_\_\_\_

D5

A

E

A

D

E/D



Cit - y streets don't have much pit - y. \_\_\_\_ When you're down \_ that's where you'll \_



oo, \_\_\_\_

Oo, \_\_\_\_

Chorus

A

D/A

stay. In the

Rhy. Fig. 3A

0 2 2 2 5 5 | 0 2 2 2 5 5 | 0 2 2 2 5 5 | 0 2 2 2 5 5 | 2 2 2 2 5 5 | 2 2 2 2 5 5 | 2 2 2 2 5 5 | 2 2 2 2 5 5 | 0 2 2 3 5 5 | 0 2 2 3 5 5 | 0 2 2 3 5 5 | 0 2 2 3 5 5 | 4 2 2 3 5 5 | 4 2 2 3 5 5 | 4 2 2 3 5 5 | 4 2 2 3 5 5

Rhy. Fig. 3

0 2 2 2 5 5 | 0 2 2 2 5 5 | 0 2 2 2 5 5 | 0 2 2 2 5 5 | 0 2 2 2 5 5 | 0 2 2 2 5 5 | 0 2 2 2 5 5 | 0 2 2 2 5 5 | 0 2 2 2 5 5 | 0 2 2 2 5 5 | 0 2 2 2 5 5 | 0 2 2 2 5 5 | 0 2 2 2 5 5 | 0 2 2 2 5 5 | 0 2 2 2 5 5 | 0 2 2 2 5 5

E/A

D6/A

cit - y, uh - huh.

Oo,

End Rhy. Fig. 3A

7 7 7 7 7 7 | 7 7 7 7 7 7 | 7 7 7 7 7 7 | 7 7 7 7 7 7 | 7 7 7 7 7 7 | 7 7 7 7 7 7 | 7 7 7 7 7 7 | 7 7 7 7 7 7 | 7 7 7 7 7 7 | 7 7 7 7 7 7 | 7 7 7 7 7 7 | 7 7 7 7 7 7 | 7 7 7 7 7 7 | 7 7 7 7 7 7 | 7 7 7 7 7 7

End Rhy. Fig. 3

7 7 7 7 7 7 | 7 7 7 7 7 7 | 7 7 7 7 7 7 | 7 7 7 7 7 7 | 7 7 7 7 7 7 | 7 7 7 7 7 7 | 7 7 7 7 7 7 | 7 7 7 7 7 7 | 7 7 7 7 7 7 | 7 7 7 7 7 7 | 7 7 7 7 7 7 | 7 7 7 7 7 7 | 7 7 7 7 7 7 | 7 7 7 7 7 7 | 7 7 7 7 7 7

Gtrs. 1 & 2: w/ Rhy. Figs. 3 & 3A  
A

D/A

E/A

D6/A

In the cit - y, —  
uh - huh.)

Interlude

A

G

D5

A

E

A

Gtr. 3 (dist.)  
*mf*  
w/ slide

Gtr. 2

Gtr. 1

Gtrs. 1 & 2: w/ Rhy. Figs. 1 & 1A  
D5

A

Gtr. 3 tacet  
E

A

D5

A

Gtr. 4 (dist.)  
*f*  
w/ slide

*steady gliss.*

Gtr. 3

Verse

Gtrs. 1 & 2: w/ Rhy. Figs. 2 & 2A (1 7/8 times) Gtr. 4 tacet

E A D5 A E A D5 A

2. I was born here in the city, with my back against the wall.

E A D5 A E A

Noth-ing grows, and life ain't ver-y pret-ty.

D E/D A E D5 A

No one's there to catch you when you fall. Some-where out on that ho-ri-

Rhy. Fig. 4 End Rhy. Fig. 4

Gtr. 3: w/ Rhy. Fig. 4 (2 times)

E A D5 A E A

- zon far a-way from the ne-on sky,

(Oo, oo, Oo,

D5 A E A D E/D

I know there must be some-thing bet-ter and I can't stay an-oth-er

oo, Oo,

**Chorus**

Gtrs. 1 & 2: w/ Rhy. Figs. 3 & 3A (2 times)

A D/A E/A

night. \_\_\_\_\_ In the cit - y, \_\_\_\_\_ uh -

\_\_\_\_\_ oo. \_\_\_\_\_

D6/A A D/A E/A

huh. \_\_\_\_\_ In the cit - y. \_\_\_\_\_

Oo, \_\_\_\_\_ oo, \_\_\_\_\_ uh -

**Outro**

Gtr. 1: w/ Rhy. Fig. 3 (till fade)

D6/A A D/A

huh. \_\_\_\_\_ In the

Gtr. 4 *sva* -----

12-17 17 19-17

Gtr. 2

14	14	14	14	14	14	14	14	14	14	15	15	15	15	15	15	15	15	15	15
14	14	14	14	14	14	14	14	14	14	14	14	14	14	14	14	14	14	14	14
14	14	14	14	14	14	14	14	14	14	16	16	16	16	16	16	16	16	16	16
0	0	0	0	0	0	0	0	0	0	0	0	0	0	0	0	0	0	0	0

E/A

D6/A

A

cit - y. —

*loco*

17

17 17 17 17 17    17    17 17 17 17    19 19 19 19 19    19    19 19 19 19    14 14 14 14 14    14    14 14 14 14

16 16 16 16 16    16    16 16 16 16    18 18 18 18 18    18    18 18 18 18    14 14 14 14 14    14    14 14 14 14

0 0 0 0 0    0    0 0 0 0 0    0 0 0 0 0    0    0 0 0 0 0    0 0 0 0 0    0    0 0 0 0 0

D/A

E/A

D6/A

In the cit - y. —

*let ring* -----

15/17 17\    15/17    17/15 15/17 17 17/19 15/17

15 15 15 15 15    15    15 15 15 15    17 17 17 17 17    17    17 17 17 17    19    19    0

14 14 14 14 14    14    14 14 14 14    16 16 16 16 16    16    16 16 16 16    18 18 18 18 18    18    18 18 18 18

0 0 0 0 0    0    0 0 0 0 0    0 0 0 0 0    0    0 0 0 0 0    21 19 21    0

A

D/A

E/A

In the cit - y, — uh -

let ring -----

let ring -----

Detailed description: This system contains a guitar score for three measures. The top staff is a treble clef with a key signature of two sharps (F# and C#). The first measure is a whole rest. The second measure contains a quarter note G4, a quarter note A4, and a quarter note B4. The third measure contains a quarter note C5, a quarter note B4, and a quarter note A4. Below the staff are guitar-specific notations: a wavy line for the first measure, a '7' over a '0' for the second, and a '9' for the third. The bottom staff shows fret numbers: 0, 14, 14, 14 for the first measure; 0, 14, 14 for the second; and 0, 14, 14 for the third.

D6/A

A

D/A

huh.)

sva -----

let ring -----

let ring -----

let ring -----

Detailed description: This system contains a guitar score for three measures. The top staff is a treble clef with a key signature of two sharps (F# and C#). The first measure is a whole rest. The second measure contains a quarter note G4, a quarter note A4, and a quarter note B4. The third measure contains a quarter note C5, a quarter note B4, and a quarter note A4. Below the staff are guitar-specific notations: a wavy line for the first measure, a '12' over a '17' for the second, and a '19' over a '17' for the third. The bottom staff shows fret numbers: 14, 14, 14 for the first measure; 14, 14, 14, 14, 14, 14 for the second; and 14, 15, 15, 15, 15, 15, 15, 14, 14, 14, 14, 14, 14, 14, 16, 16, 16, 16 for the third.



E/A *Begin fade* D6/A A

*loco*

*let ring -* *let ring -*

17	17 \ 15	15 / 17	17	17 \ 15	15 / 17	17	17 \ 15	15 / 17	(17) \ 16	17	15 / 17 \ 15
17 17 17 17 17	17 17 17 17 17	10 10 10	10 10 10	10 10 10	10 10 10	10 10 10	10 10 10	10 10 10	14 14 14	14	14 14 14 14 14
16 16 16 16 16	16 16 16 16 16	9 9 11	10 10 10	10 10 10	10 10 10	10 10 10	11 11 11	11 11 11	14 14 14	14	14 14 14 14 14
18 18 18 18 18	18 18 18 18 18	12 12 12	11 11 11	11 11 11	11 11 11	11 11 11	11 11 11	11 11 11	14 14 14	14	14 14 14 14 14
									0 0 0	0	0 0 0 0 0

*Fade out*

D/A E/A D6/A

*let ring -* *let ring - - - - -*

17	17 \ 15	17 \ 15	15 / 17	17	15 / 17	17	15 / 17	19	15 / 17	17 19	(19) \ 15	17
14 15	15	15 15 15	15	17	17 17 17 17	17	19 19 19	19	19 19 19	X X	X X	X X
14 14 14	14 14 14	14 14 14	14	16	16 16 16 16	16	19 19 19	19	19 19 19	X X	X X	X X
14 16	16	16 16 16	16 16	16	16 16 16 16	16	19 19 19	19	19 19 19	X X	X X	X X
0			0	0	16 / 18	18	18 18 18 18	18	0 0 0	0 0 0	0 0 0	0 0 0